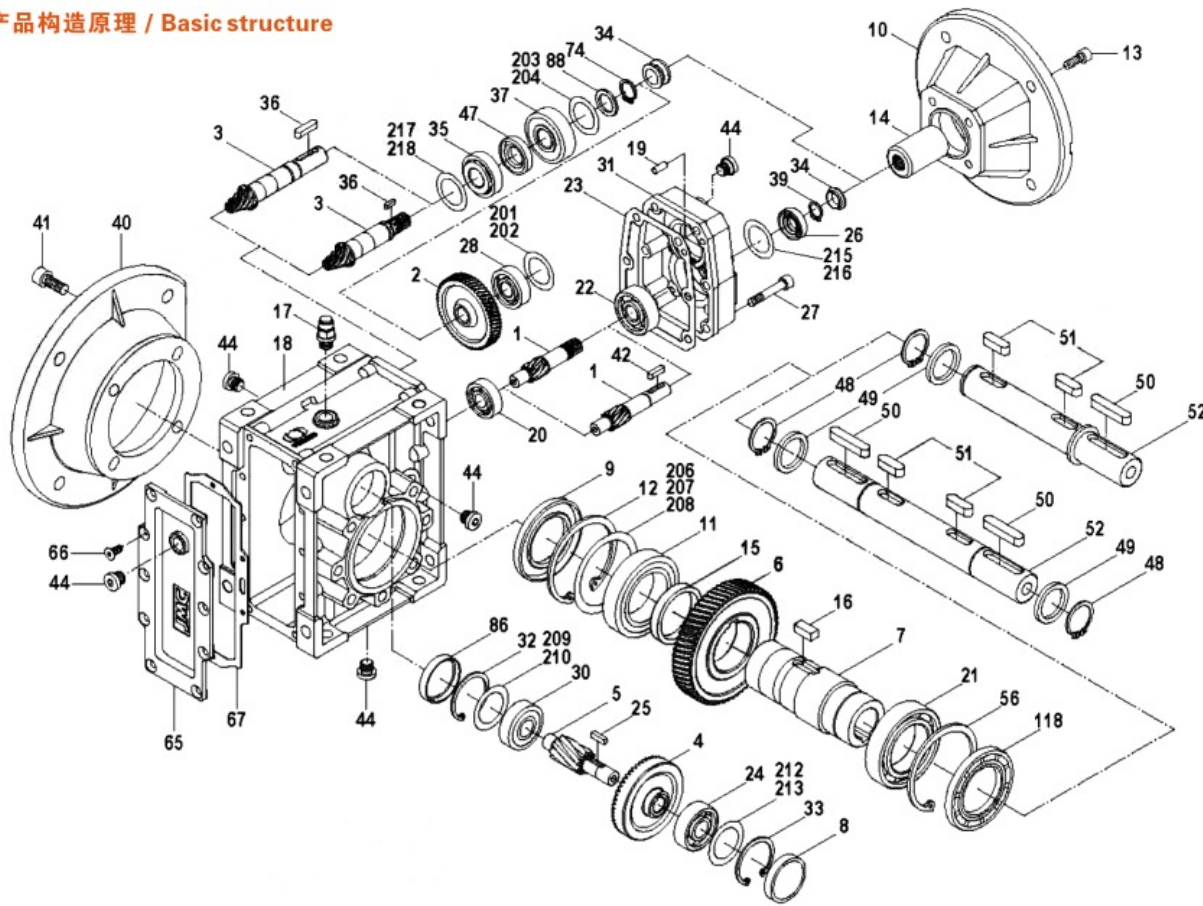




产品结构原理 / Basic structure



1 主动齿轮 / Pinion	25 键 / Key	56 孔用挡圈 / Hole-circlip
2 从动齿轮 / Gear	26 油封 / Oil seal	65 齿轮箱盖板 / Gearcase cover
3 主动齿轮轴 / Pinion shaft	27 内六角螺钉 / Inner hex screw	66 内六角沉头螺钉 / Hexaaon sunk screw
4 从动齿轮 / Gear	28 轴承 / Bearing	67 橡胶垫 / Rubber gasket
5 主动齿轮轴 / Pinion shaft	30 轴承 / Bearing	74 轴用挡圈 / Shaft-circlip
6 从动齿轮 / Gear	31 三级齿轮箱 / 3 stage gearcase	86 油封盖 / Closing cap
7 输出轴 / Hollow shaft	32 孔用挡圈 / Hole-circlip	88 垫圈 / Washer
8 油封盖 / Closing cap	33 孔用挡圈 / Hole-circlip	118 油封 / Oil seal
9 油封 / Oil seal	34 橡胶套 / Rubber boot	201 调整垫片 / Shim ring
10 输入法兰 / Input fiange	35 轴承 / Bearing	202 调整垫片 / Shim ring
11 轴承 / Bearing	36 键 / Key	203 调整垫片 / Shim ring
12 孔用挡圈 / Hole-circlip	37 轴承 / Bearing	204 调整垫片 / Shim ring
13 内六角螺钉 / Inner hex screw	39 轴用挡圈 / Shaft-circlip	206 调整垫片 / Shim ring
14 输入轴 / Input shaft	40 输出法兰 / Output flage	207 调整垫片 / Shim ring
15 间隔套 / Spacer	41 内六角螺钉 / Inner hex screw	208 调整垫片 / Shim ring
16 键 / Key	42 键 / Key	209 调整垫片 / Shim ring
17 排气阀 / Breather valve	44 油塞 / Oil plug	210 调整垫片 / Shim ring
18 齿轮箱体 / Gearcase	47 油封 / Oil seal	212 调整垫片 / Shim ring
19 圆柱销 / Stifte	48 轴用挡圈 / Shaft-cirdip	213 调整垫片 / Shim ring
20 轴承 / Bearing	49 垫片 / Gasket	215 调整垫片 / Shim ring
21 轴承 / Bearing	50 键 / Key	216 调整垫片 / Shim ring
22 轴承 / Bearing	51 键 / Key	217 调整垫片 / Shim ring
23 密封纸垫片 / Housing gasket	52 双向输出轴 / Double output shaft	218 调整垫片 / Shim ring
24 轴承 / Bearing	53 单向输出轴 / Single output shaft	

# E-KM/KB

## 斜齿-准双曲面齿轮减速器



### 结构特点 STRUCTURE FEATURES

- 1、优质铝合金铸造, 重量轻, 不生锈;
- 2、准双曲面齿轮传动, 输出扭矩大;
- 3、传动平稳, 噪音小, 适合在恶劣环境中长期连续工作;
- 4、散热效率高;
- 5、美观耐用, 体积小;
- 6、可适应全方位安装。

- 1、Made of high-quality aluminum alloy, light in weight and non-rusting.
- 2、Drive by hypois gear, Large in output torque.
- 3、Smooth in running and low in noise, can work long time in dreadful conditions.
- 4、High in radiating efficiency.
- 5、Good-looking in appearance, durable in service life and small in volume.
- 6、Suitable for omnibearing installation.

### 主要材料 MAIN MATERIALS

- 1、外壳: 铝合金 (机座: 25-55);
- 2、齿轮: 20CrMnTi, 渗碳淬火, 齿面硬度56-62HRC, 精磨后保持渗碳层厚度0.3-0.5mm。

- 1、Housing: die-cast aluminum alloy (frame size: 25 to 55);
- 2、Gear: 20CrMnTi, carbonize heat treatment make the hardness of gear's surface up to 56-62 HRC, retain carburization layer's thickness between 0.3 and 0.5mm after precise grinding.

### 应用行业领域 APPLICATION FIELD

包装机械、化工机械、环境环保设备、食品机械、自动化流水线等等。

Packing machinery, chemical machinery, environmental protection industries, food machinery, auto assembling line machinery etc.



减速器选型表 / GEAR UNIT SELECTION TABLES

**E-KM25..**  $n_1=1400r/min$  **120Nm**

减速器型号 Gear units	i 公称 Nominal	i 实际 Actual	$n_2$ [r/min]	$M_{2n}$ [Nm]	$Fr_2$ [N]
3级 / Stage					
E-KM25C	300	291.79	4.8	110	4100
E-KM25C	250	244.29	5.8	130	4100
E-KM25C	200	200.44	7.0	130	4100
E-KM25C	150	146.67	9.6	130	4000
E-KM25C	125	120.34	12	130	3770
E-KM25C	100	101.04	14	130	3560
E-KM25C	75	74.62	19	130	3220
E-KM25C	60	62.36	23	120	3030
E-KM25C	50	52.36	27	110	2860
2级 / Stage					
E-KM25B	60	58.36	24	110	2960
E-KM25B	50	48.86	29	130	2790
E-KM25B	40	40.09	35	130	2610
E-KM25B	30	29.33	48	130	2350
E-KM25B	25	24.07	59	130	2200
E-KM25B	20	20.21	70	130	2080
E-KM25B	15	14.92	94	130	1880
E-KM25B	12.5	12.47	113	130	1770
E-KM25B	10	10.47	134	130	1670
E-KM25B	7.5	7.73	182	100	1510

**E-KM35..,E-KB35..**  $n_1=1400r/min$  **200Nm**

减速器型号 Gear units	i 公称 Nominal	i 实际 Actual	$n_2$ [r/min]	$M_{2n}$ [Nm]	$Fr_2$ [N]
3级 / Stage					
E-KM35C E-KB35C	300	302.50	4.7	170	4800
E-KM35C E-KB35C	250	243.57	5.8	200	4800
E-KM35C E-KB35C	200	196.43	7.2	200	4800
E-KM35C E-KB35C	150	151.56	9.3	200	4650
E-KM35C E-KB35C	125	122.22	12	200	4330
E-KM35C E-KB35C	100	101.27	14	200	4070
E-KM35C E-KB35C	75	73.33	20	160	3650
E-KM35C E-KB35C	60	63.33	23	140	3480
E-KM35C E-KB35C	50	52.48	27	120	3270
2级 / Stage					
E-KM35B E-KB35B	60	60.50	24	170	3430
E-KM35B E-KB35B	50	48.71	29	200	3190
E-KM35B E-KB35B	40	39.29	36	200	2970
E-KM35B E-KB35B	30	30.31	47	200	2720
E-KM35B E-KB35B	25	24.44	58	200	2530
E-KM35B E-KB35B	20	20.25	70	200	2380
E-KM35B E-KB35B	15	14.67	96	190	2130
E-KM35B E-KB35B	12.5	12.67	111	165	2030
E-KM35B E-KB35B	10	10.50	134	135	1910
E-KM35B E-KB35B	7.5	7.60	185	100	1710

**E-KM45..,E-KB45..**  $n_1=1400r/min$  **350Nm**

减速器型号 Gear units	i 公称 Nominal	i 实际 Actual	$n_2$ [r/min]	$M_{2n}$ [Nm]	$Fr_2$ [N]
3级 / Stage					
E-KM45C E-KB45C	300	297.21	4.8	350	6500
E-KM45C E-KB45C	250	240.89	5.9	350	6500
E-KM45C E-KB45C	200	200.66	7.0	350	6500
E-KM45C E-KB45C	150	151.20	9.3	350	6500
E-KM45C E-KB45C	125	125.95	12	350	5980
E-KM45C E-KB45C	100	99.22	15	350	5520
E-KM45C E-KB45C	75	75.45	19	350	5040
E-KM45C E-KB45C	60	62.43	23	350	4730
E-KM45C E-KB45C	50	49.18	29	350	4370
2级 / Stage					
E-KM45B E-KB45B	60	59.44	24	350	4660
E-KM45B E-KB45B	50	48.18	30	350	4340
E-KM45B E-KB45B	40	40.13	35	350	4080
E-KM45B E-KB45B	30	30.24	47	350	3720
E-KM45B E-KB45B	25	25.19	56	350	3500
E-KM45B E-KB45B	20	19.84	71	350	3230
E-KM45B E-KB45B	15	15.09	93	350	2950
E-KM45B E-KB45B	12.5	12.49	113	350	2770
E-KM45B E-KB45B	10	9.84	143	350	2550
E-KM45B E-KB45B	7.5	7.48	188	280	2330

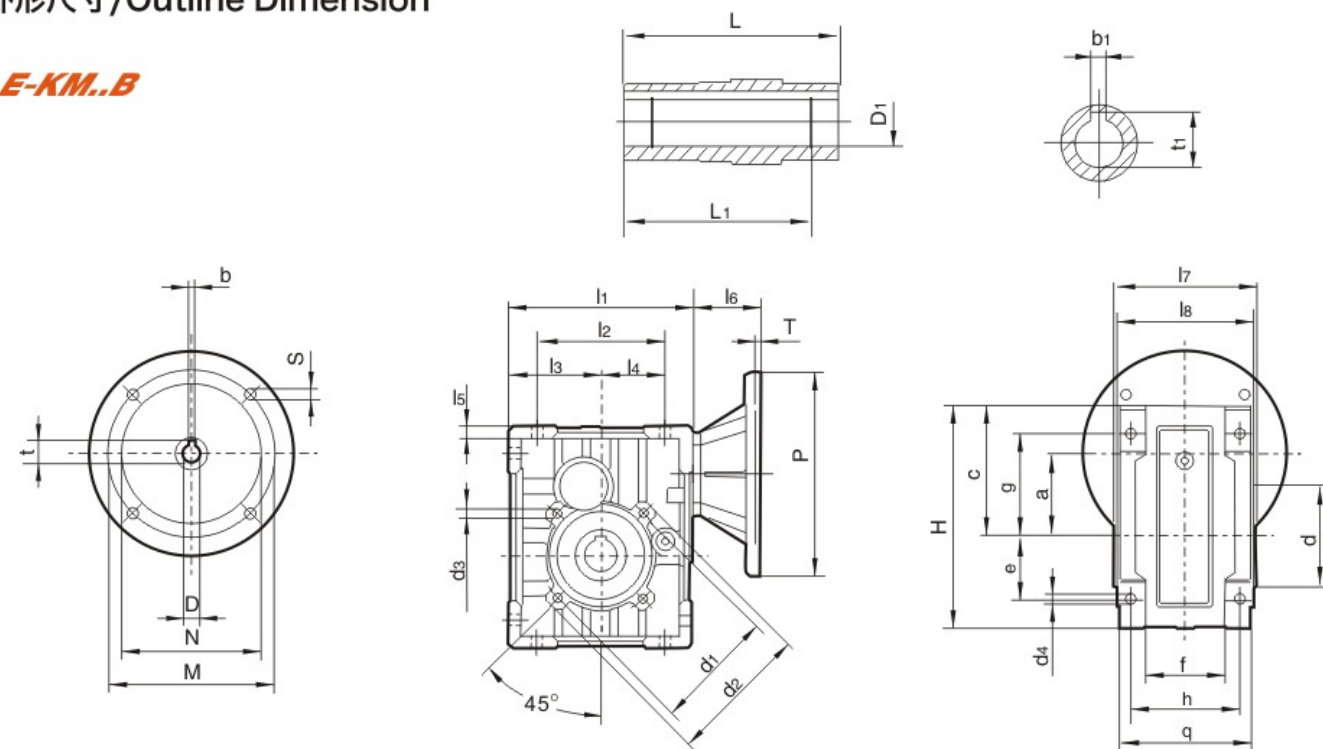
**E-KM55..,E-KB55..**  $n_1=1400r/min$  **500Nm**

减速器型号 Gear units	i 公称 Nominal	i 实际 Actual	$n_2$ [r/min]	$M_{2n}$ [Nm]	$Fr_2$ [N]
3级 / Stage					
E-KM55C E-KB55C	300	295.18	4.8	460	8300
E-KM55C E-KB55C	250	240.89	5.9	500	8300
E-KM55C E-KB55C	200	200.66	7.0	500	8300
E-KM55C E-KB55C	150	151.20	9.3	500	8050
E-KM55C E-KB55C	125	125.95	12	500	7580
E-KM55C E-KB55C	100	99.22	15	500	7000
E-KM55C E-KB55C	75	75.45	19	500	6390
E-KM55C E-KB55C	60	62.43	23	450	6000
E-KM55C E-KB55C	50	49.18	29	350	5540
2级 / Stage					
E-KM55B E-KB55B	60	59.04	24	460	5890
E-KM55B E-KB55B	50	48.18	30	500	5500
E-KM55B E-KB55B	40	40.13	35	500	5170
E-KM55B E-KB55B	30	30.24	47	500	4710
E-KM55B E-KB55B	25	25.19	56	500	4430
E-KM55B E-KB55B	20	19.84	71	500	4090
E-KM55B E-KB55B	15	15.09	93	500	3730
E-KM55B E-KB55B	12.5	12.49	113	460	3510
E-KM55B E-KB55B	10	9.84	143	360	3240
E-KM55B E-KB55B	7.5	7.48	188	280	2950

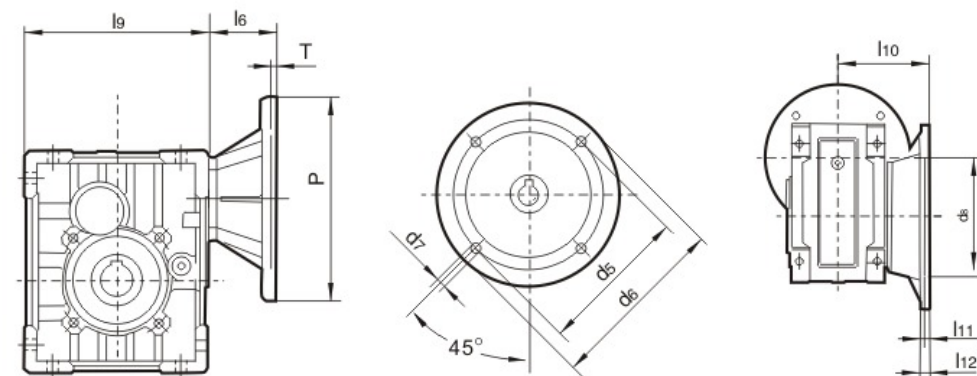


外形尺寸/Outline Dimension

**E-KM..B**



**E-KM..C**



IEC	$D_{EB}$	b	t	P	M	N	S	T
63B5	11	4	12.8	140	115	95	9	4
71B5	14	5	16.3	160	130	110	9	4
71B14	14	5	16.3	105	85	70	7	4
80B5	19	6	21.8	200	165	130	11	4
80B14	19	6	21.8	120	100	80	7	4
90B5	24	8	27.3	200	165	130	11	4
90B14	24	8	27.3	140	115	95	9	4
100/112B5	28	8	31.3	250	215	180	13.5	4.5
100/112B14	28	8	31.3	160	130	110	9	4.5
132B5	38	10	41.3	300	265	230	14	4.5

IEC	25	35	45	55
63B5	45	45	—	—
71B5	52	52	59	59
71B14	52	52	79	79
80B5	72	72	79	79
80B14	72	72	79	79
90B5	72	72	79	79
90B14	72	72	79	79
100/112B5	—	—	89	89
100/112B14	—	—	89	89
132B5	—	—	—	—

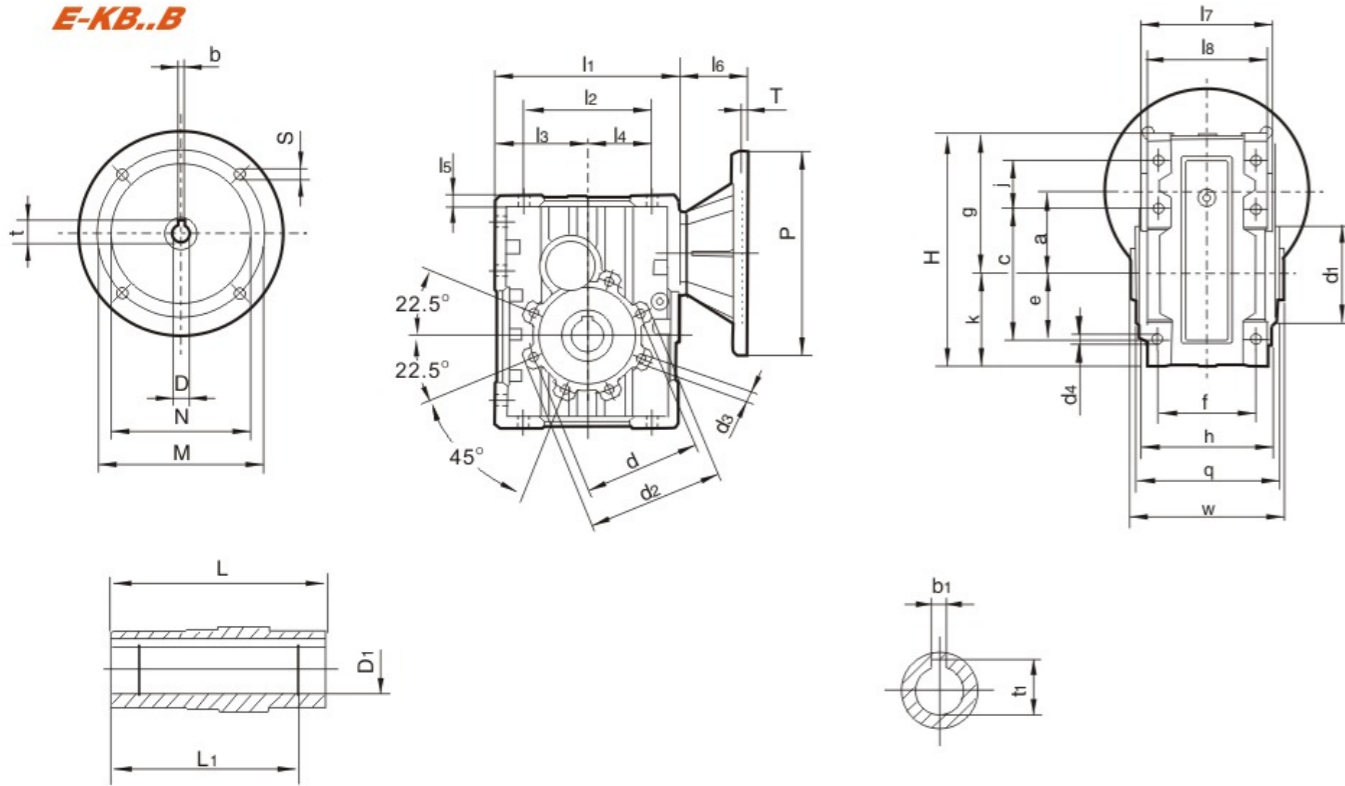
	$d_5$	$d_6$	$d_7$	$d_8$	$l_{10}$	$l_{11}$	$l_{12}$	
E-KM25...	FA	85	125	11	170	90	5	9
	FB	85	125	11	170	120	5	9
	FC	130	160	9.5	110	89	5	10
	FD	115	140	11	95	72	5	14.5
E-KM35...	FA	150	180	11	115	82	6	10
	FB	150	180	11	115	112	6	10
	FC	165	200	11	130	98	5	10
	FD	165	200	11	130	107	5	10
E-KM45...	FA	165	200	14	130	111	6	13
	FB	130	160	11	110	90	6	13
E-KM55...	FA	175	210	14	152	111	6	13
	FB	215	250	14	180	122	6	18
	FC	165	200	11	130	110	6	17
	FD	175	210	14	152	151	6	13

	H	L	$L_1$	a	c	d	$d_1$	$d_2$	$d_4$	$d_3$	e	f	g	h	q	$l_1$	$l_2$	$l_3$	$l_4$	$l_5$	$l_7$	$l_8$	$l_9$	$D_{1ES}$	$b_1$	$t_1$
E-KM25...	155	92	77	57	95	70	85	100	8.5	M8*10	40	51	75	70	85	121	80	60	40	7	92	87	155	24	8	27.3
E-KM35...	174	112	97	64.5	102	80	95	110	8.5	M8*14	50	63	80	85	103	144	100	72	50	9	112	106	178	25	8	28.3
E-KM45...	205	120	105	74.5	119	95	115	140	11.5	M8*14	60	68	93	90	112	173	120	86	60	10	120	114	213	30	8	33.3
E-KM55...	238	140	122	88	135	110	130	160	13	M10*18	70	74	102	100	130	206	140	103	70	11	140	134	246	35	10	38.3

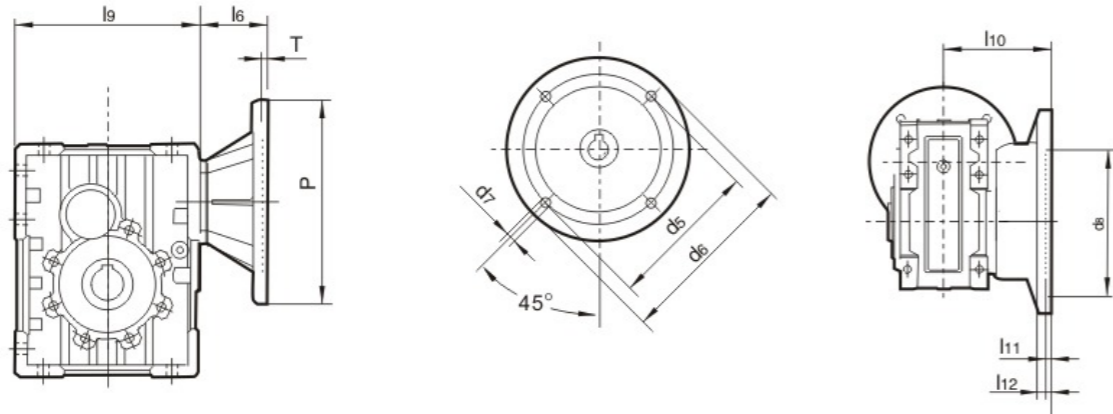


外形尺寸/Outline Dimension

**E-KB..B**



**E-KB..C**



IEC	D <sub>EB</sub>	b	t	P	M	N	S	T
63B5	11	4	12.8	140	115	95	9	4
71B5	14	5	16.3	160	130	110	9	4
71B14	14	5	16.3	105	85	70	7	4
80B5	19	6	21.8	200	165	130	11	4
80B14	19	6	21.8	120	100	80	7	4
90B5	24	8	27.3	200	165	130	11	4
90B14	24	8	27.3	140	115	95	9	4
100/112B5	28	8	31.3	250	215	180	13.5	4.5
100/112B14	28	8	31.3	160	130	110	9	4.5
132B5	38	10	41.3	300	265	230	14	4.5

	35	45	55
63B5	45	—	—
71B5	52	59	59
71B14	52	79	79
80B5	72	79	79
80B14	72	79	79
90B5	72	79	79
90B14	72	79	79
100/112B5	—	89	89
100/112B14	—	89	89
132B5	—	—	—

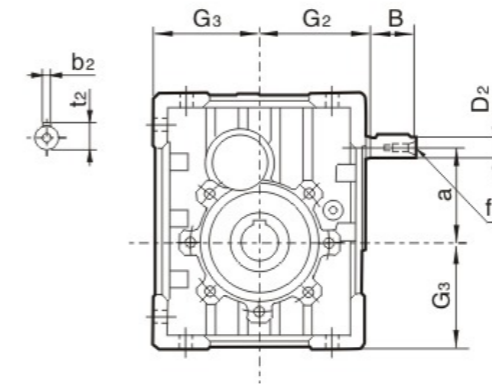
		d <sub>5</sub>	d <sub>6</sub>	d <sub>7</sub>	d <sub>8</sub>	l <sub>10</sub>	l <sub>11</sub>	l <sub>12</sub>
E-KB35...	FA	150	180	11	115	116	5	11
	FB	150	180	11	115	86	5	11
E-KB45...	FA	165	200	13.5	130	111	5	12
	FB	165	200	13.5	130	85	5	12
E-KB55...	FA	176	210	13.5	152	151	6	15
	FB	176	210	13.5	152	110.5	6	15

	H	L	L <sub>1</sub>	a	c	d	d <sub>1</sub>	d <sub>2</sub>	d <sub>3</sub>	e	f	g	h	q	j	k	l <sub>1</sub>	l <sub>2</sub>	l <sub>3</sub>	l <sub>4</sub>	l <sub>5</sub>	l <sub>7</sub>	l <sub>9</sub>	w	D <sub>1ES</sub>	b <sub>1</sub>	t <sub>1</sub>	
E-KB35...	182.5	120	105	64.5	102	75	90	105	9	M8*14	51	54	110	76	94	37.5	72.5	145	102	72.5	51	9	120	178.5	106	25	8	28.3
E-KB45...	220.5	127	112	74.5	126	90	110	126	11	M8*14	63	62	133.5	82	104	46.5	87	174	126	86.7	46.5	9	127	214	117	30	8	33.3
E-KB55...	224.5	140	122	88	144	110	130	150	12	M10*18	72	74	145.5	100	125	45.5	100	203	144	100	72	11	140	243	129	35	10	38.3

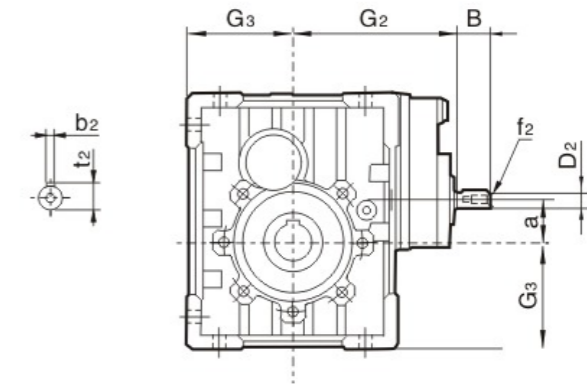


E-KM..HS 外形尺寸/Outline Dimension

**E-KM..B..HS**



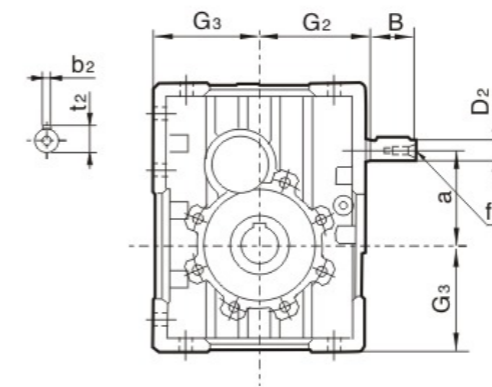
**E-KM..C..HS**



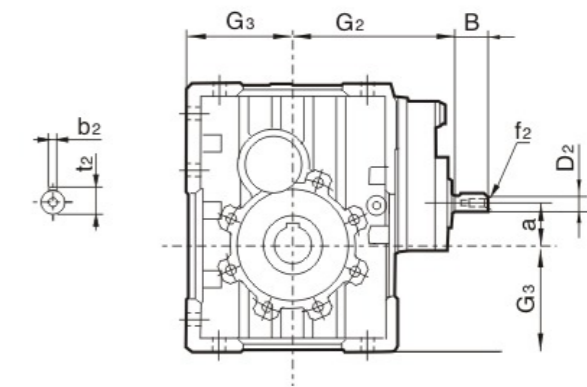
	B	D <sub>2j6</sub>	G <sub>2</sub>	G <sub>3</sub>	a	b <sub>2</sub>	f <sub>2</sub>	t <sub>2</sub>
E-KM25B	23	11	65	60	57	4	—	12.5
E-KM25C	23	11	100	60	21.5	4	—	12.5
E-KM35B	30	14	76	72	64.5	5	M6	16
E-KM35C	23	11	111	72	29	4	—	12.5
E-KM45B	40	16	91	86	74.5	5	M6	18
E-KM45C	30	14	132	86	30.5	5	M6	16
E-KM55B	40	19	107	103	88	6	M6	21.5
E-KM55C	30	14	148	103	44	5	M6	16

E-KB..HS 外形尺寸/Outline Dimension

**E-KB..B..HS**



**E-KB..C..HS**



	B	D <sub>2j6</sub>	G <sub>2</sub>	G <sub>3</sub>	a	b <sub>2</sub>	f <sub>2</sub>	t <sub>2</sub>
E-KM35B	30	14	76	72.5	64.5	5	M6	16
E-KM35C	23	11	111	72.5	29	4	—	12.5
E-KM45B	40	16	91	87	74.5	5	M6	18
E-KM45C	30	14	132	87	30.5	5	M6	16
E-KM55B	40	19	107	100	88	6	M6	21.5
E-KM55C	30	14	148	100	44	5	M6	16