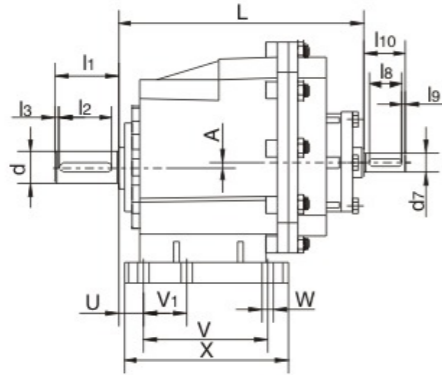
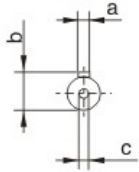




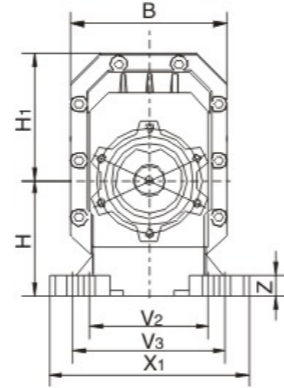
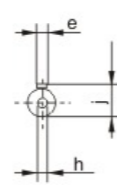
## 外形尺寸/Outline Dimension

### E-RC..HS

输出/OUTPUT

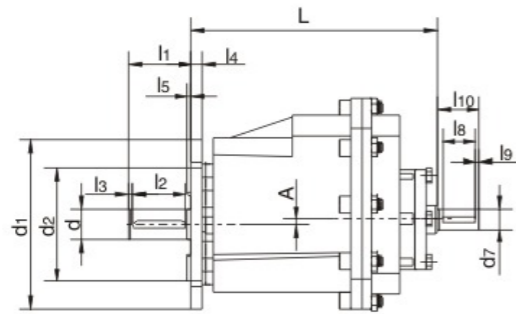
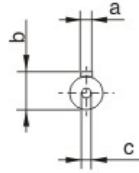


输入/INPUT

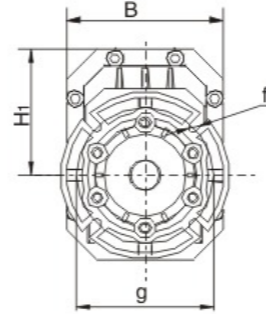
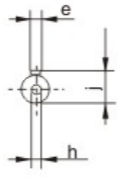


### E-RCF..HS

输出/OUTPUT

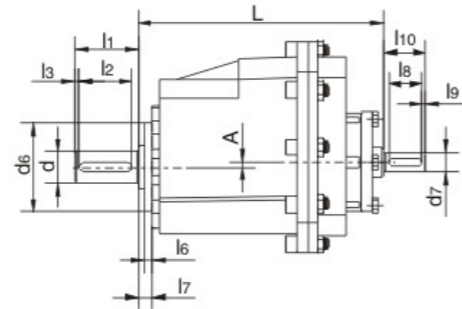
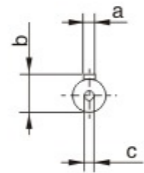


输入/INPUT

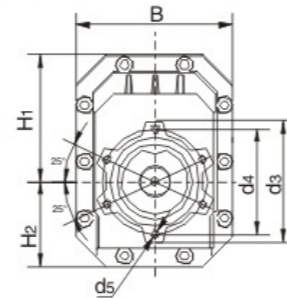
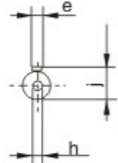


### E-RCZ..HS

输出/OUTPUT

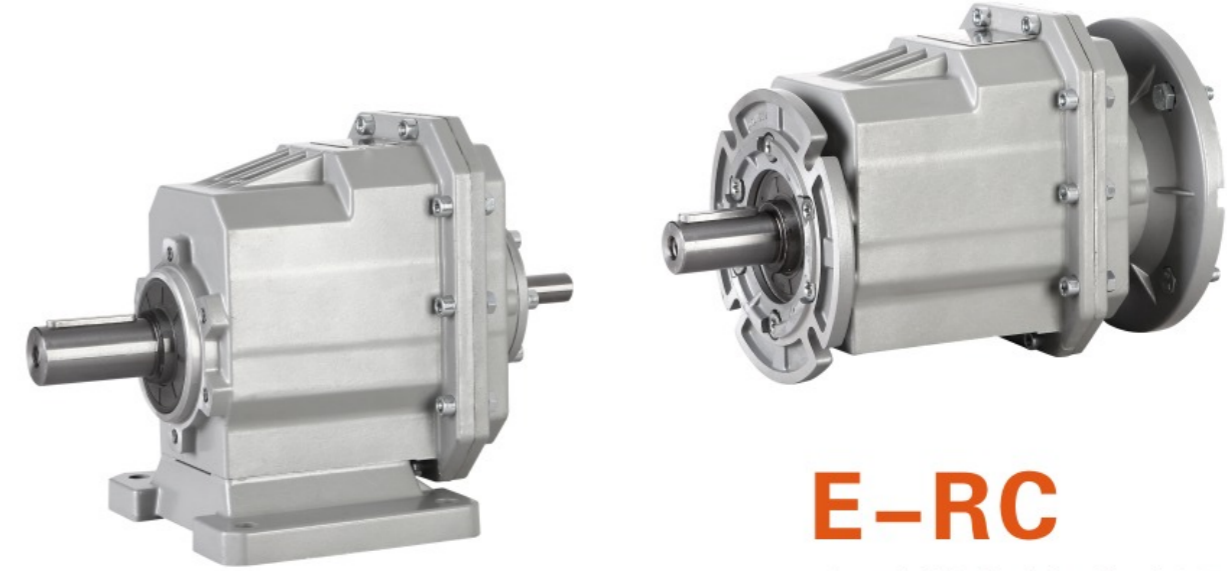


输入/INPUT



系列代号 Foot Code	U	V	V <sub>1</sub>	V <sub>2</sub>	V <sub>3</sub>	W	X	X <sub>1</sub>	H	Z	
01	B01	18	87	50	110	-	9	118	130	85	15
	M01	18	80	-	110	120	9	118	145	75	15
	B02	18	107.5	60	130	-	11	136	155	95	17
02	M02	25	85	-	110	120	9	112	145	75	15
	B02	18	107.5	60	130	-	11	136	155	100	17
	M02	25	85	-	110	120	9	112	145	80	15
03	B01	18	87	50	110	-	9	118	130	90	15
	M01	18	80	-	110	120	9	118	145	80	15
	B03	18	130	70	160	-	11	156	190	110	20
04	M03	30	100	-	135	150	11	150	190	110	18
	B04	20.5	130	-	170	-	14	168	205	105	20
	M04	32	110	-	170	185	14	150	230	110	20
04	B04	23.5	130	-	170	-	14	168	205	115	20
	M04	35	110	-	170	185	14	150	230	120	20
	B03	21	130	70	160	-	11	156	190	120	20
	M03	33	100	-	135	150	11	150	190	120	18
	B05	19.5	149.5	-	180	-	14	185	215	130	20

	A	B	L	H <sub>1</sub>	H <sub>2</sub>	a	b	c	d	e	h	j	d <sub>3</sub>	d <sub>4</sub>	d <sub>5</sub>	d <sub>6</sub>	d <sub>7</sub>	l <sub>1</sub>	l <sub>2</sub>	l <sub>3</sub>	l <sub>6</sub>	l <sub>7</sub>	l <sub>8</sub>	l <sub>9</sub>	l <sub>10</sub>	d <sub>1</sub>	d <sub>2</sub>	f	g	L <sub>4</sub>	L <sub>5</sub>
01	6.5	119	187	99.5	62.5	6	22.5	M6X16	φ20h6	6	M6X16	18	90	75	M8X15	60	φ16j6	40	32	3.5	7	13	32	3.5	40	120	80	7	100	8	3
																										140	95	9	115	9	3
																										160	110	9	130	10	3.5
02	11.5	127	197	100	67	8	28	M10X22	φ25h6	8	M6X16	21.5	100	85	M8X15	72	φ19j6	50	40	3.5	7	13	32	3.5	40	160	110	9	130	10	3.5
																										200	130	11	165	11	3.5
																										160	110	9	130	10	3.5
03	5	148	212	119.5	80.5	8	33	M10X22	φ30h6	8	M6X16	18	116	100	M8X15	85	φ19j6	60	50	3.5	7.5	13.5	32	3.5	40	200	130	11	165	11	3.5
																										250	180	13	215	13	4
																										160	110	9	130	10	3.5
04	15	162	225	131	91	10	38	M12X28	φ35h6	10	M8X20	27	130	110	M10X17	92	φ24j6	70	56	7	8	15	40	5	50	200	130	11	165	11	3.5
																										250	180	13	215	13	4
																										160	110	9	130	10	3.5



## E-RC 小型斜齿轮减速器

### 结构特点 STRUCTURE FEATURES

- 1、优质铝合金铸造,重量轻,不生锈;
- 2、斜齿轮传动,效率高,输出扭矩大;
- 3、模块化;可组合多种结构形式,满足各种传动条件的需求。
- 4、安装方式多样。

- 1、Made of high-quality aluminum alloy, light in weight and non-rusting.
- 2、Driving by helical gear, High efficiency, Large in output torque.
- 3、Modularity, Multistructure, can be combined in many forms of transmission.
- 4、Universal mounting.

### 主要材料 MAIN MATERIALS

- 1、外壳: 铝合金(机座: 01-04);
- 2、齿轮: 20CrMnTi, 渗碳淬火, 齿面硬度56-62HRC, 精磨后保持渗碳层厚度0.3-0.5mm;

- 1、Housing: die-cast aluminum alloy (frame size: 01 to 04);
- 2、Gear: 20CrMnTi, carbonize heat treatment make the hardness of gear's surface up to 56-62 HRC, retain carburization layer's thickness between 0.3 and 0.5mm after precise grinding.

### 应用行业领域 APPLICATION FIELD

包装机械, 化工机械, 环境环保设备, 食品机械, 自动化流水线等等。

Packing machinery, chemical machinery, environmental protection industries, food machinery, auto assembling line machinery etc.





减速器选型表 / GEAR UNIT SELECTION TABLES

**E-RC01..**  $n_1=1400r/min$  **120Nm**

$n_2$ [r/min]	$M_{2max}$ [Nm]	$Fr_2$ [N]	$i$
26	120	2600	53.33
29	120	2600	49.00*
31	120	2600	45.89
35	120	2600	40.10
39	120	2560	35.47
47	120	2420	29.56
49	120	2380	28.50
59	120	2230	23.56
67	120	2200	20.75
71	120	2100	19.83
73	120	2050	19.07
78	90	2030	17.86
90	120	2000	15.60
96	120	1900	14.62
101	90	1860	13.80*
118	120	1770	11.90
122	120	1770	11.5*
126	120	1770	11.10
143	120	1660	9.81
153	80	1630	9.17
181	80	1540	7.72
246	70	1390	5.69
302	70	1290	4.63
366	70	1210	3.82

**E-RC02..**  $n_1=1400r/min$  **200Nm**

$n_2$ [r/min]	$M_{2max}$ [Nm]	$Fr_2$ [N]	$i$
26	200	4500	54.00*
28	200	4500	49.61*
30	200	4500	46.46*
34	200	4500	40.60*
39	200	4270	35.91*
47	200	4100	29.93*
48	200	3970	28.88*
59	200	3730	23.85*
70	200	3520	20.08*
70	180	3420	19.87
77	180	3410	18.26
82	140	3330	17.10
94	200	3200	14.94
95	200	3180	14.81*
106	140	3060	13.21
116	200	2970	12.05
127	200	2850	11.01
132	200	2800	10.63*
141	200	2780	9.95
159	120	2670	8.78
189	120	2520	7.39
257	100	2280	5.45
316	100	2120	4.43
383	80	1990	3.66

**E-RC03..**  $n_1=1400r/min$  **300Nm**

$n_2$ [r/min]	$M_{2max}$ [Nm]	$Fr_2$ [N]	$i$
23	300	6000	60.80*
24	300	6000	58.09
27	300	6000	51.30*
28	300	6000	50.02
32	300	6000	44.18*
32	300	6000	43.75
36	300	6000	38.63
40	300	5860	34.62
46	300	5800	30.57
49	300	5480	28.30
56	280	5250	24.99
66	280	5020	21.15*
73	280	4820	19.24*
77	280	4750	18.21*
81	280	4660	17.33*
88	260	4440	15.93
105	260	4410	13.30*
111	260	4160	12.60*
136	240	3910	10.30
154	220	3750	9.08
177	180	3590	7.93*
222	180	3320	6.31
255	150	3170	5.48
311	150	2970	4.50
374	150	2790	3.74

**E-RC04..**  $n_1=1400r/min$  **500Nm**

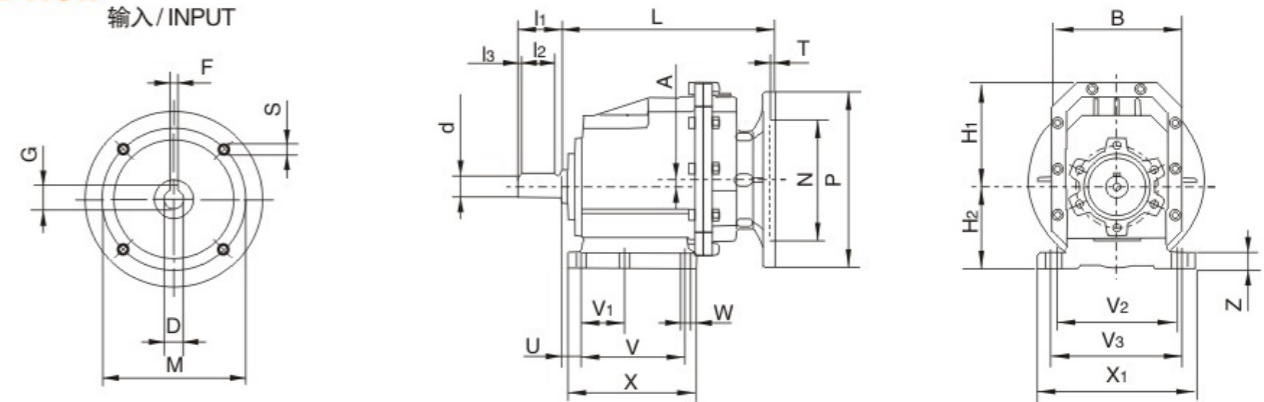
$n_2$ [r/min]	$M_{2max}$ [Nm]	$Fr_2$ [N]	$i$
23	500	8000	60.80*
24	500	8000	58.09
27	500	8000	51.30*
28	500	8000	50.02
32	500	8000	44.18*
32	500	8000	43.75
36	500	8000	38.63
40	500	7950	34.62
46	500	7850	30.57
49	500	7430	28.30
56	480	7250	24.99
66	480	6810	21.15*
73	480	6720	19.24*
77	480	6500	18.21*
81	480	6310	17.33*
88	460	6020	15.93
105	460	5800	13.30*
111	460	5640	12.60*
136	440	5300	10.30
154	320	5100	9.08
177	260	4860	7.93*
222	260	4510	6.31
255	230	4300	5.48
311	230	4030	4.50
374	200	3780	3.74



外形尺寸/Outline Dimension

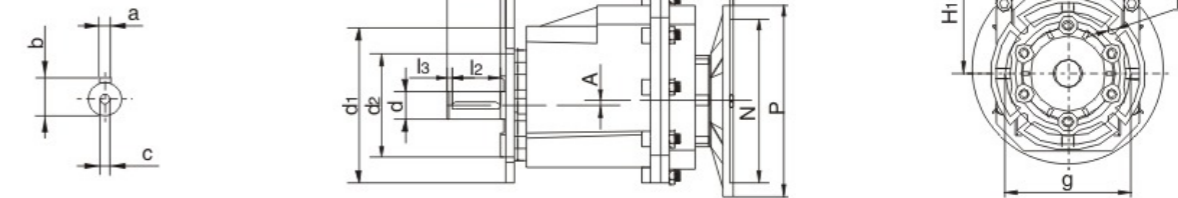
**E-RC..**

输入/INPUT

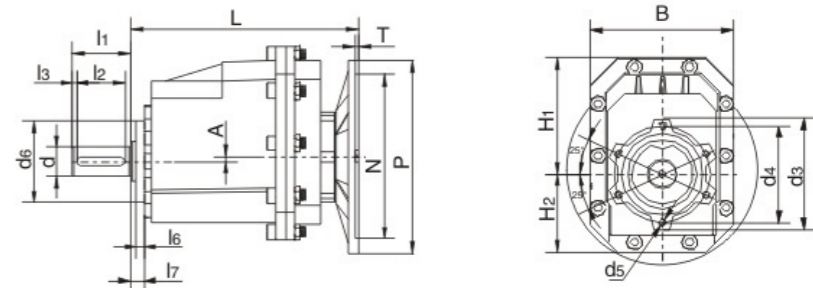


**E-RCF..**

输出/OUTPUT



**E-RCZ.**



系列代号 Foot Code	U	V	V1	V2	V3	W	X	X1	H	Z	
01	B01	18	87	50	110	-	9	118	130	85	15
	M01	18	80	-	110	120	9	118	145	75	15
	B02	18	107.5	60	130	-	11	136	155	95	17
02	M02	25	85	-	110	120	9	112	145	75	15
	B02	18	107.5	60	130	-	11	136	155	100	17
	M02	25	85	-	110	120	9	112	145	80	15
03	B01	18	87	50	110	-	9	118	130	90	15
	M01	18	80	-	110	120	9	118	145	80	15
	B03	18	130	70	160	-	11	156	190	110	20
	M03	30	100	-	135	150	11	150	190	110	18
04	B04	20.5	130	-	170	-	14	168	205	105	20
	M04	32	110	-	170	185	14	150	230	110	20
	B04	23.5	130	-	170	-	14	168	205	115	20
	M04	35	110	-	170	185	14	150	230	120	20
	B03	21	130	70	160	-	11	156	190	120	20
04	M03	33	100	-	135	150	11	150	190	120	18
	B05	19.5	149.5	-	180	-	14	185	215	130	20

IEC	$D_{EB}$	F	G	P	M	N	S	T
63B5	11	4	12.8	140	115	95	9	4
71B5	14	5	16.3	160	130	110	9	4
71B14	14	5	16.3	105	85	70	7	4
80B5	19	6	21.8	200	165	130	11	4
80B14	19	6	21.8	120	100	80	7	4
90B5	24	8	27.3	200	165	130	11	4
90B14	24	8	27.3	140	115	95	9	4
100/112B5	28	8	31.3	250	215	180	13.5	4.5
100/112B14	28	8	31.3	160	130	110	9	4.5

	A	B	L	H1	H2	a	b	c	d	$d_3$	$d_4$	$d_5$	$d_6$	$l_1$	$l_2$	$l_3$	$l_6$	$l_7$	$d_1$	$d_2$	f	g	$L_4$	$L_5$
01	6.5	119	195	99.5	62.5	6	22.5	M6X16	$\phi$ 20h6	90	75	M8X15	60	40	32	3.5	7	13	120	80	7	100	8	3
																			140	95	9	115	9	3
																			160	110	9	130	10	3.5
02	11.5	127	205	100	67	8	28	M10X22	$\phi$ 25h6	100	85	M8X15	72	50	40	3.5	7	13	140	95	9	115	9	3
																			160	110	9	130	10	3.5
																			200	130	11	165	11	3.5
03	5	148	237	119.5	80.5	8	33	M10X22	$\phi$ 30h6	116	100	M8X15	85	60	50	3.5	7.5	13.5	160	110	9	130	10	3.5
																			200	130	11	165	11	3.5
																			250	180	13	215	13	4
04	15	162	250	131	91	10	38	M12X28	$\phi$ 35h6	130	110	M10X17	92	70	56	7	8	15	160	110	9	130	10	3.5
																			200	130	11	165	11	3.5
																			250	180	13	215	13	4